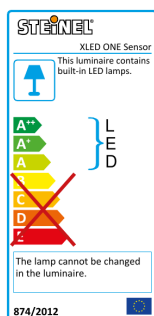
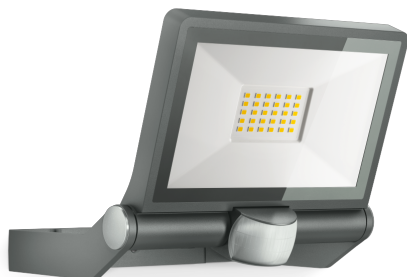


XLED ONE Sensor

Anthracite

EAN 4007841 065249



LED

long life LED
50.000 h3000K
warm-whiteinfrared sensor
180°

max. 12 m



IP44



180° vertical



180° vertical



2 - 2000 lux



8 sec - 35 min



Indoor/Outdoor

Function description

Advanced, long-lasting and effective lighting and sensor technology. XLED ONE SENSOR wall and ceiling spot with infrared sensor (12 m reach). LED panel tilts through 180°. Warm-white light: (3000 K) and 2550 lm guarantee perfect illumination. With powerful reflector and low 23,5 W consumption. Extra long-life LEDs (30 years). Time setting: 8 s to 35 min. Twilight setting: 2 to 2000 lux.

Technical specifications

Dimensions (L x W x H)	202 x 229 x 195 mm
Mains power supply	220 – 240 V / 50 – 60 Hz
Mounting height max.	3,00 m
Sensor Technology	passive infrared
Output	23,5 W
Interconnection	No
Luminous flux	2550 lm
Colour temperature	3000 K
Colour variation LED	SDCM3
Colour Rendering Index CRI	80-89
With lamp	Yes, STEINEL LED system
Lamp	LED cannot be replaced
LED life expectancy (max. °C)	50000 h
Drop in luminous flux in accordance with LM80	L70B10
LED cooling system	Passive Thermo Control
With motion detector	Yes
Detection angle	180 °
Sneak-by guard	No
Capability of masking out individual segments	Yes

Reach, radial	r = 3 m (14 m ²)
Reach, tangential	r = 12 m (226 m ²)
Photo-cell controller	Yes
Twilight setting	2 – 2000 lx
Time setting	8 s – 35 Min.
Basic light level function	No
Main light adjustable	No
Settings via	Potentiometers
Soft light start	No
Impact resistance	IK03
IP-rating	IP44
Protection class	I
Ambient temperature	-20 – 40 °C
Housing material	Aluminium
Cover material	Glass transparent
Manufacturer's Warranty	3 years
PU1, net weight	1,185 kg
Version	Anthracite
PU1, EAN	4007841065249

Sensor-switched LED floodlight

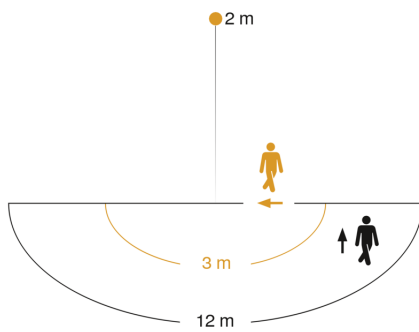
XLED ONE Sensor

Anthracite

EAN 4007841 065249



Detection Zone



Mögliche Montagehöhe: 1,80 m – 3,00 m

Orange: radial

Schwarz: tangential

Dimension Drawing

