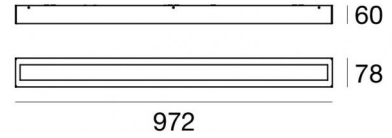




Ceiling Lights | 220-240 V | 108 topLED 18 W DC - 20 W AC | CRI 80  
8259



### Technical data

Type	Surface
Installation position	Wall lights - Ceiling
Installation environment	Indoor
Light Source	LED
Optics	Diffused
Light emission direction	downward and upward
Nominal power	18 W DC
Total Power	20 W
Source lumens	2618 lm
Voltage	220 - 240 V AC
Frequency	60 - 50 Hz
CCT / Tone	3000 K
Colour rendering index	80 Ra
C.C. / C.V.	AC
Safety class	1
IP	IP40
Glow wire test	650°
Direct mounting on normally flammable surfaces	No
CE	Yes
Driver included	Driver
Dimmable article	Phase cut
Directional	No
Tilting	No
Walk-over	No
Drive-over	No
Cable included	No
Resin potting	No
Type of light emission	Double emission
Net weight	3.1 Kg
Electrostatic discharge protection	No
Surge protection	No

### Finishing casing

Material	Iron
Colour	Embossed white RAL 9003
Processing	Coating

### Finishing diffuser

Material	PMMA
Colour	opaline

Ceiling Lights | 220-240 V | 108 topLED 18 W DC - 20 W AC | CRI 80 | Base 8259

Double emission ceiling lights for indoor application. The warm white LED light source with a diffused light distribution is composed of 108 topped LEDs with CCT of 3000 K and a CRI 80; the source luminous flux is 2618 lm, with a 145.4 lm/W nominal luminous efficacy.

The device body is made of iron and features a embossed white ral 9003 finish, processed by means of coating; the diffuser is made of pmma. The ingress protection degree is IP40; the total weight is of 3.1 kg.

The total absorbed power is 20 W.

The device features protection class I and can be wall lights or ceiling-mounted.

Compliant with the EN 60598-1 standard and its specific provisions.

### Energy efficiency class

This product contains 3 light sources of energy efficiency class D.

### Illuminotechnical Features

Light Output Ratio (LOR)	58 %
Source lumens	2618 lm
Delivered lumens	1530 lm
Consumption	20 W
Luminaire efficacy	76 lm/W
Colour temperature	3000 K
Standard Deviation of Colour Matching	3 Step MacAdam
Colour rendering index	80 Ra
Junction temperature (lighting fixture)	80

Standard Operating Ambient Temperature 25°C

### LED Life / Failure Ratio

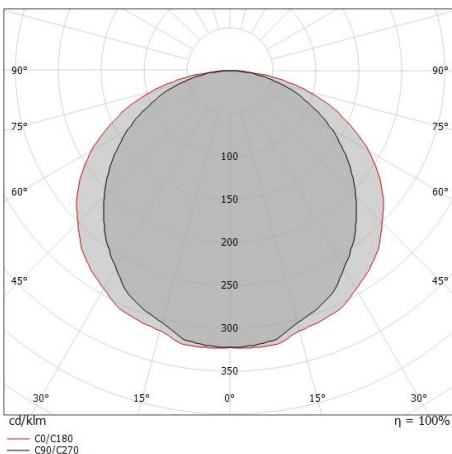
L70 B20 C0 72500h

### UGR

UGR axial	13.9
UGR transversal	20.7
X=4H   Y=8H	S=0.25H
Reflection factor	70/50/20

### OPTICAL

C90/C270 optics	110°
C0/C180 optics	129°
Light distribution simmetry	Symmetrical 2 assis



Distance [m]	Cone diameter [m]	illuminance [lx]
0.5	1.43 2.09	E(0°) 1973 E(C90) 55.0° 186 E(C0) 64.4° 80
1.0	2.86 4.17	E(0°) 493 E(C90) 55.0° 47 E(C0) 64.4° 20
1.5	4.28 6.26	E(0°) 219 E(C90) 55.0° 21 E(C0) 64.4° 9
2.0	5.71 8.35	E(0°) 123 E(C90) 55.0° 12 E(C0) 64.4° 5
2.5	7.14 10.44	E(0°) 79 E(C90) 55.0° 7 E(C0) 64.4° 3
3.0	8.57 12.52	E(0°) 55 E(C90) 55.0° 5 E(C0) 64.4° 2

— C0/C180 (Half-peak divergence: 128.8°)  
— C90/C270 (Half-peak divergence: 110.0°)



Box\_SB | Ceiling Lights | Accessories  
8259



Dimmer  
220-240V

**Code**  
KIT0026