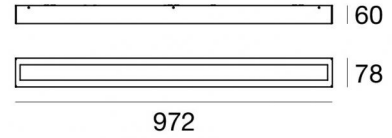




Ceiling Lights | 220-240 V | 108 topLED 18 W DC - 20 W AC | CRI 80
8259N



Technical data	
Type	Surface
Installation position	Wall lights - Ceiling
Installation environment	Indoor
Light Source	LED
Optics	Diffused
Light emission direction	downward and upward
Nominal power	18 W DC
Total Power	20 W
Source lumens	2879 lm
Voltage	220 - 240 V AC
Frequency	60 - 50 Hz
CCT / Tone	4000 K
Colour rendering index	80 Ra
C.C. / C.V.	AC
Safety class	1
IP	IP40
Glow wire test	650°
Direct mounting on normally flammable surfaces	No
CE	Yes
Driver included	Driver
Dimmable article	Phase cut
Directional	No
Tilting	No
Walk-over	No
Drive-over	No
Cable included	No
Resin potting	No
Type of light emission	Double emission
Net weight	3.1 Kg
Electrostatic discharge protection	No
Surge protection	No

Finishing casing	
Material	Iron
Colour	Embossed white RAL 9003
Processing	Coating

Finishing diffuser	
Material	PMMA
Colour	opaline



Ceiling Lights | 220-240 V | 108 topLED 18 W DC - 20 W AC | CRI 80 | Base 8259N

Double emission ceiling lights for indoor application. The natural white LED light source with a diffused light distribution is composed of 108 topped LEDs with CCT of 4000 K and a CRI 80; the source luminous flux is 2879 lm, with a 159.9 lm/W nominal luminous efficacy.

The device body is made of iron and features a embossed white ral 9003 finish, processed by means of coating; the diffuser is made of pmma. The ingress protection degree is IP40; the total weight is of 3.1 kg.

The total absorbed power is 20 W.

The device features protection class I and can be wall lights or ceiling-mounted.

Compliant with the EN 60598-1 standard and its specific provisions.

Energy efficiency class

This product contains 3 light sources of energy efficiency class D.

Illuminotechnical Features

Light Output Ratio (LOR)	60 %
Source lumens	2879 lm
Delivered lumens	1750 lm
Consumption	20 W
Luminaire efficacy	87 lm/W
Colour temperature	4000 K
Standard Deviation of Colour Matching	3 Step MacAdam
Colour rendering index	80 Ra
Junction temperature (lighting fixture)	80

Standard Operating Ambient Temperature 25°C

LED Life / Failure Ratio

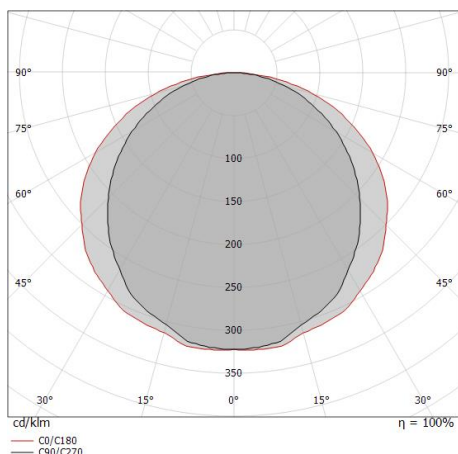
L70 B20 C0 72500h

UGR

UGR axial	14.3
UGR transversal	21.2
X=4H Y=8H	S=0.25H
Reflection factor	70/50/20

OPTICAL

C90/C270 optics	110°
C0/C180 optics	129°
Light distribution simmetry	Symmetrical 2 assis



Distance [m]	Cone diameter [m]	illuminance [lx]
0.5	1.43 2.09	E(0°) 2258 E(C90) 213 E(C0) 91
1.0	2.86 4.17	E(0°) 564 E(C90) 53 E(C0) 23
1.5	4.28 6.26	E(0°) 251 E(C90) 24 E(C0) 10
2.0	5.71 8.35	E(0°) 141 E(C90) 13 E(C0) 6
2.5	7.14 10.44	E(0°) 90 E(C90) 9 E(C0) 4
3.0	8.57 12.52	E(0°) 63 E(C90) 6 E(C0) 3

Distance [m] Cone diameter [m] illuminance [lx]

— C0/C180 (Half-peak divergence: 128.8°)
— C90/C270 (Half-peak divergence: 110.0°)



Box_SB | Ceiling Lights | Accessories
8259N



Dimmer
220-240V

Code

KIT0026