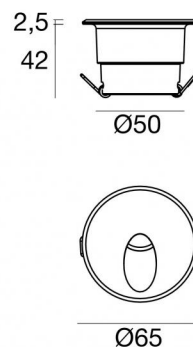


Wall Lights | 1 x powerLED 2 W DC 630 mA | CRI 80
85543W70



| Technical data | |
|--|------------------------|
| Type | Encasement with flange |
| Installation position | Wall lights |
| Installation environment | Outdoor |
| Light Source | LED |
| Optics | Flood |
| Power | 2 W |
| Source lumens | 233 lm |
| Current intensity | 630mA |
| CCT / Tone | 3000 K |
| Colour rendering index | 80 Ra |
| C.C. / C.V. | CC |
| Energy class | A+ |
| Safety class | 3 |
| IP | IP65 |
| IK | IK10 |
| Glow wire test | 850° |
| Direct mounting on normally flammable surfaces | Yes |
| CE | Yes |
| Operating temperature | -20 / +50 |
| Driver included | No |
| Dimmable article | DALI - 1-10V |
| Directional | No |
| Tilting | No |
| Walk-over | No |
| Drive-over | No |
| Cable included | Yes |
| Cable length | 1 m |
| Resin potting | Yes |
| Type of light emission | Single emission |
| Net weight | 0.180 Kg |
| Electrostatic discharge protection | No |
| Surge protection | No |
| Ordinary temperature on the glass | 40 °C |

Finishing casing

| | |
|------------|--------------------------------------|
| Material | Aluminium |
| Colour | embossed white RAL 9003 |
| Processing | Open pore anodizing + Powder Coating |

Electronics



83102
DALI-2 Multi Power 99~264V AC / 170~276V DC



99186
On/Off Driver 180~300V AC



99179
On/Off Driver 180~300V AC



89420
On/Off Driver 190~250V AC / 260~360V DC

Wall Lights | 1 x powerLED 2 W DC 630 mA | CRI 80 | Base 85543W70

Single emission wall lights for outdoor application. The warm white LED light source with a flood light distribution is composed of 1 powered LEDs with CCT of 3000 K and a CRI 80; the source luminous flux is 233 lm, with a 116.5 lm/W nominal luminous efficacy.

The device body is made of aluminium and features a embossed white ral 9003 finish, processed by means of open pore anodizing + powder coating. The ingress protection degree is IP65; the total weight is of 0.180 kg. The power supply driver is not provided and is to be ordered separately.

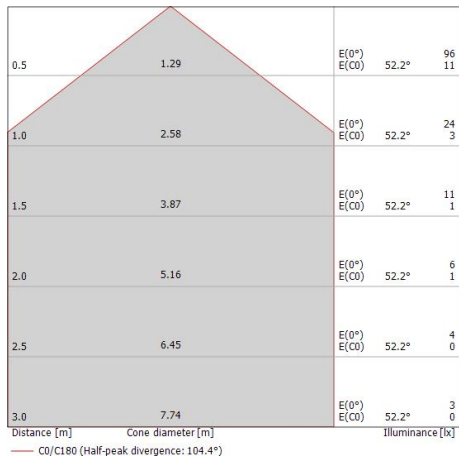
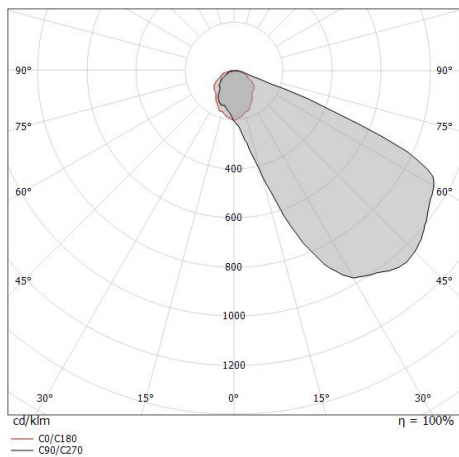
The total absorbed power is 2,0 W. The power supply cable is included and features a 1 m lenght.

The device features protection class III and can be wall lights-mounted, with a 52 mm diameter hole (in plasterboard) with an outer casing, code 84338(for concrete or masonry).



Compliant with the EN 60598-1 standard and its specific provisions.

| Illuminotechnical Features | |
|---------------------------------------|---------------|
| Light Output Ratio (LOR) | 50 % |
| Source lumens | 233 lm |
| Delivered lumens | 116.88 lm |
| Consumption | 2,0 W |
| Luminaire efficacy | 58 lm/W |
| Colour temperature | 3000 K |
| Standard Deviation of Colour Matching | 1/16 ANSI BIN |
| Colour rendering index | 80 Ra |
| LED Life / Failure Ratio | |
| L70 B10 C0 361980h (at Tj 60 Ta 25) | |

| OPTICAL | |
|-----------------------------|---------------|
| Light distribution simmetry | Symmetrical 2 |
| C0/C180 optics | 104° |



Quara_R | Wall Lights | Accessories
85543W70

| | | |
|---|---|--------------------------|
|   | <p>Outer casing</p> <p>Type of installation: masonry L=72mm, H=62mm, D=62mm</p> | <p>Code</p> <p>84338</p> |
|---|---|--------------------------|