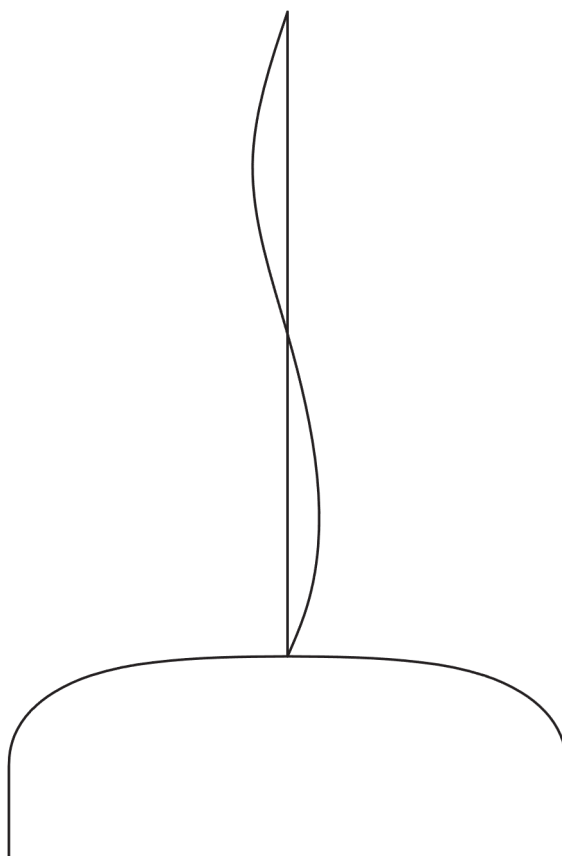


# SMITHFIELD S

Designed by Jasper Morrison, 2009

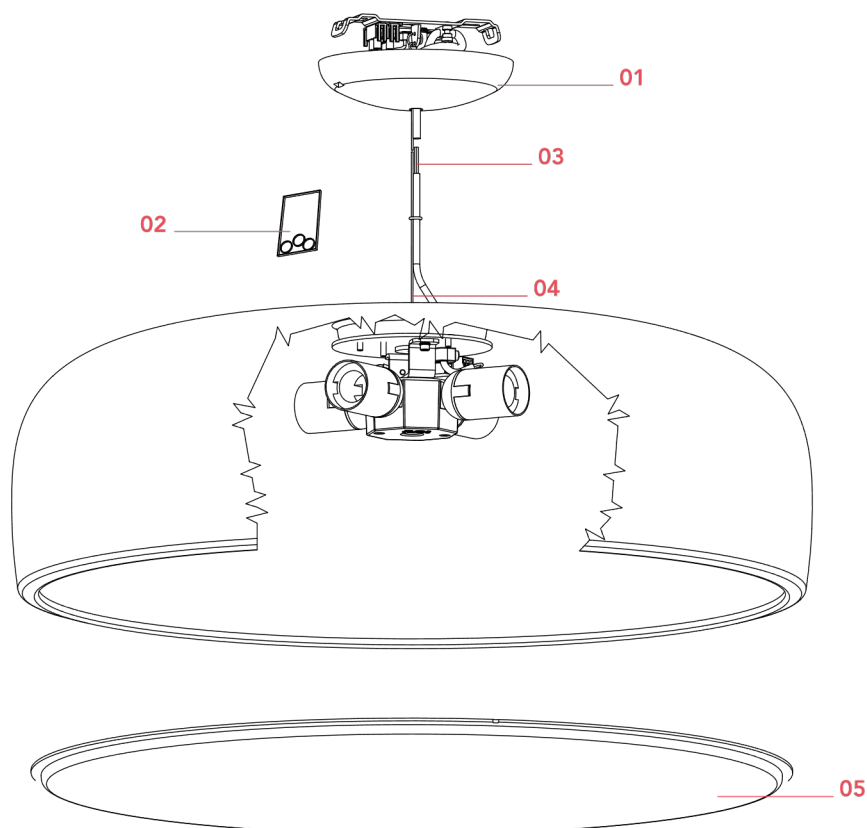
F1371039



## SMITHFIELD S

F1371039

EN



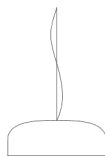
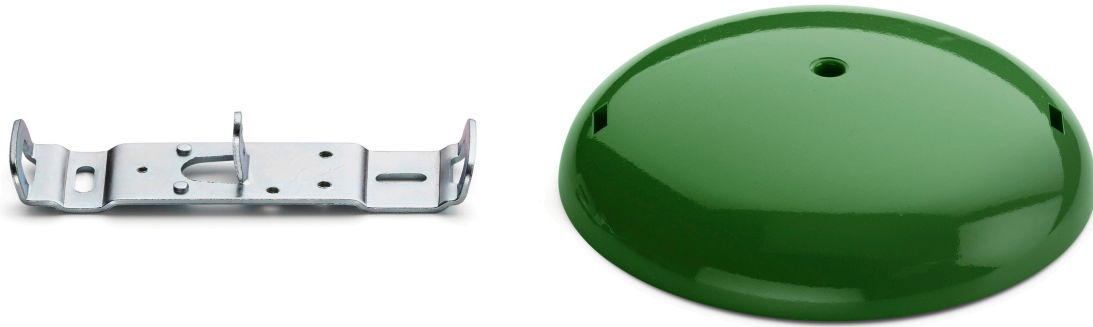
- 01. RF1367039 – Green rose assembly
- 02. RF05382 – Kit of 5 OR rings
- 03. RF29907 – 2,7mt FEP/SIL 3x0,75 transparent cable
- 04. RF29665 – 2,7mt steel wire Ø1,2mm with 19 winded wires
- 05. RF19022 – Methacrylate diffuser

SMITHFIELD S F1371039

EN

## RF1367039

GREEN ROSE ASSEMBLY



Smithfield  
S  
p.03



Smithfield  
S Pro  
p.03

WARNING! When installing and whenever acting on the appliance, ensure that the power supply has been switched off.  
For the installation of the spare-part, it is necessary to consult a qualified electrician.

SMITHFIELD S F1371039

EN

## RF1367039

GREEN ROSE ASSEMBLY

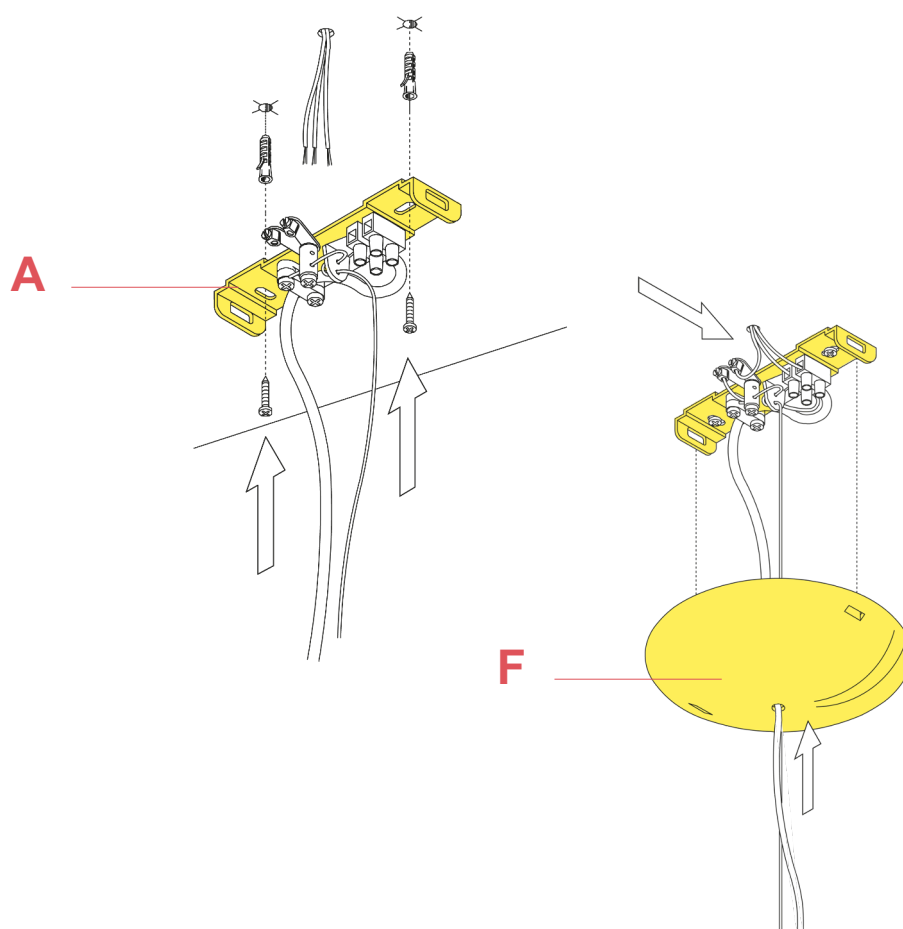


Fig.1

Fix the wall fixture (A) with the appropriate expansion bolts.

**NOTE:** Select and employ screw anchors which are suited to the surface where the appliance is to be installed.

Connect the power cable to the terminal box (not supplied with the spare-part). Mount the ceiling-rose (F).

WARNING! When installing and whenever acting on the appliance, ensure that the power supply has been switched off. For the installation of the spare-part, it is necessary to consult a qualified electrician.

SMITHFIELD S F1371039

EN

## RF05382

KIT OF 5 OR RINGS



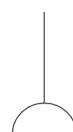
Glo-ball  
S1  
p.18



Glo-ball  
S2  
p.17



Skygarden  
1  
p.08



Skygarden  
2  
p.08



Skygarden  
Small  
p.08



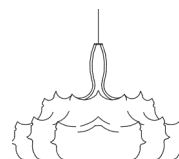
Smithfield  
S  
p.05



Smithfield  
S Pro  
p.05



Tatou  
S2  
p.11



Zeppelin 1  
p.05

WARNING! When installing and whenever acting on the appliance, ensure that the power supply has been switched off. For the installation of the spare-part, it is necessary to consult a qualified electrician.

SMITHFIELD S F1371039

EN

## RF29907

2,7MT FEP/PVC 3X0,75 TRANSPARENT CABLE



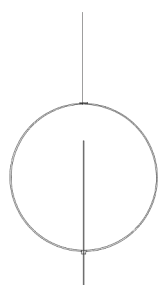
WARNING! When installing and whenever acting on the appliance, ensure that the power supply has been switched off.  
For the installation of the spare-part, it is necessary to consult a qualified electrician.

SMITHFIELD S F1371039

EN

## RF29665

STEEL CABLE 2,5MT Ø1,2 WITH 19 WINDED WIRES



Overlap  
p.09



Ray S  
p.10



Smithfield  
S  
p.07



Smithfield  
S Pro  
p.07

WARNING! When installing and whenever acting on the appliance, ensure that the power supply has been switched off. For the installation of the spare-part, it is necessary to consult a qualified electrician.

SMITHFIELD S F1371039

EN

## RF19022

METHACRYLATE DIFFUSER



Smithfield  
C  
p.03



Smithfield  
C Pro  
p.04



Smithfield  
S  
p.09



Smithfield  
S Pro  
p.09

WARNING! When installing and whenever acting on the appliance, ensure that the power supply has been switched off.  
For the installation of the spare-part, it is necessary to consult a qualified electrician.



SMITHFIELD S F1371039

EN

**RF19022**

METHACRYLATE DIFFUSER

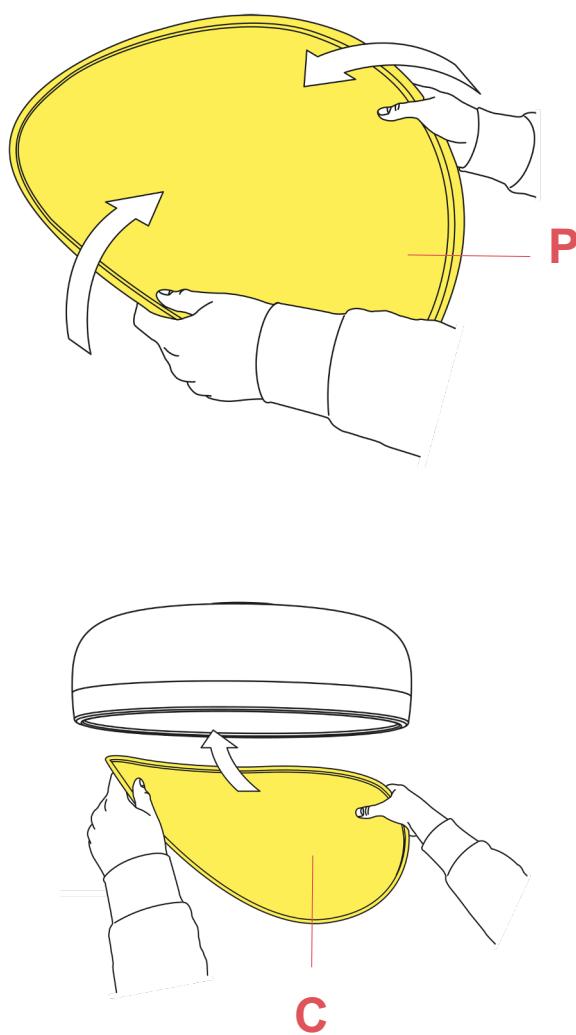


Fig.1

Mount the plastic diffuser (P) bending it slightly on the sides to ease it into the body.

WARNING! When installing and whenever acting on the appliance, ensure that the power supply has been switched off. For the installation of the spare-part, it is necessary to consult a qualified electrician.