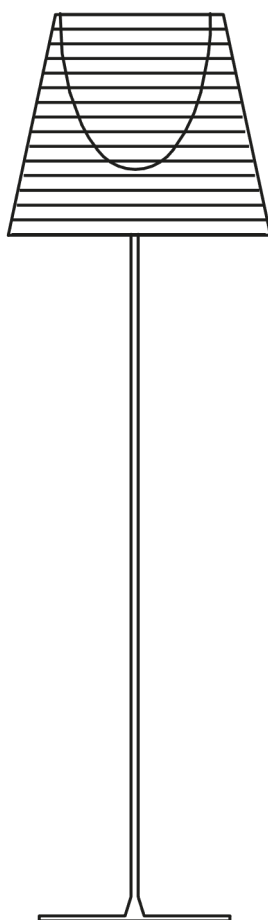


K TRIBE F2

Designed by Philippe Starck, 2007

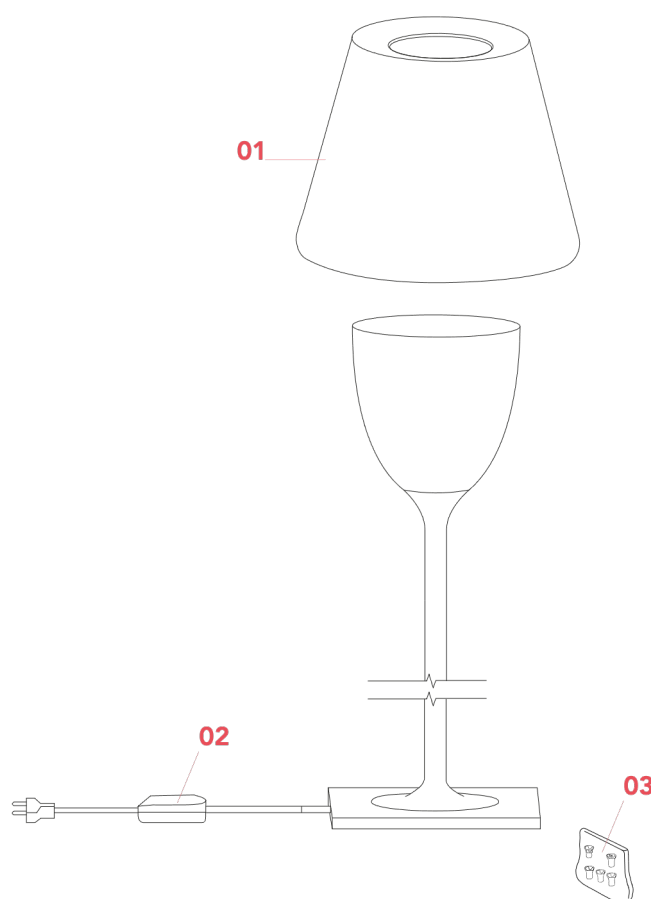
F6305030



K TRIBE F2

F6305030

EN



01. F6278030 – Fumé diffuser assembly

02. RF28045 – Led 220/240V 40-250W 4-100W Rondò dimmer

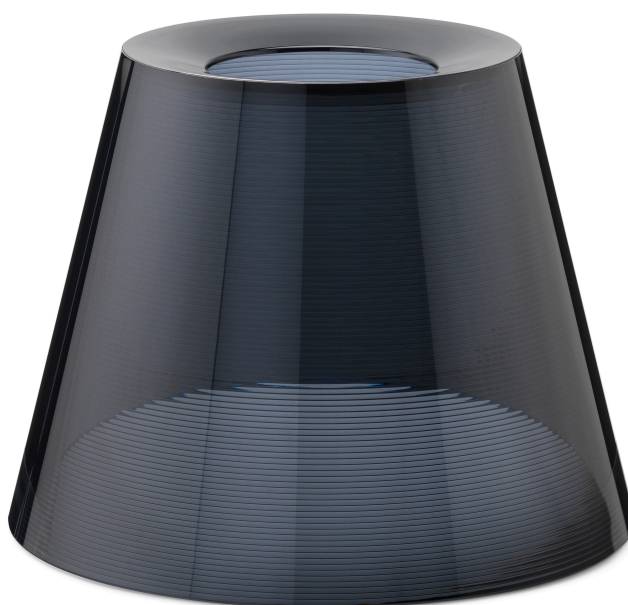
03. RF3020100 – Kit of n.5 white feet pads for base

K TRIBE F2 F6305030

EN

F6278030

FUMÉ DIFFUSER ASSEMBLY



Bibliotheque
Nationale
p.03



Ktribe
T2
p.03



Ktribe
F2
p.03

WARNING! When installing and whenever acting on the appliance, ensure that the power supply has been switched off.
For the installation of the spare-part, it is necessary to consult a qualified electrician.

K TRIBE F2 F6305030

EN

F6278030

FUMÉ DIFFUSER ASSEMBLY

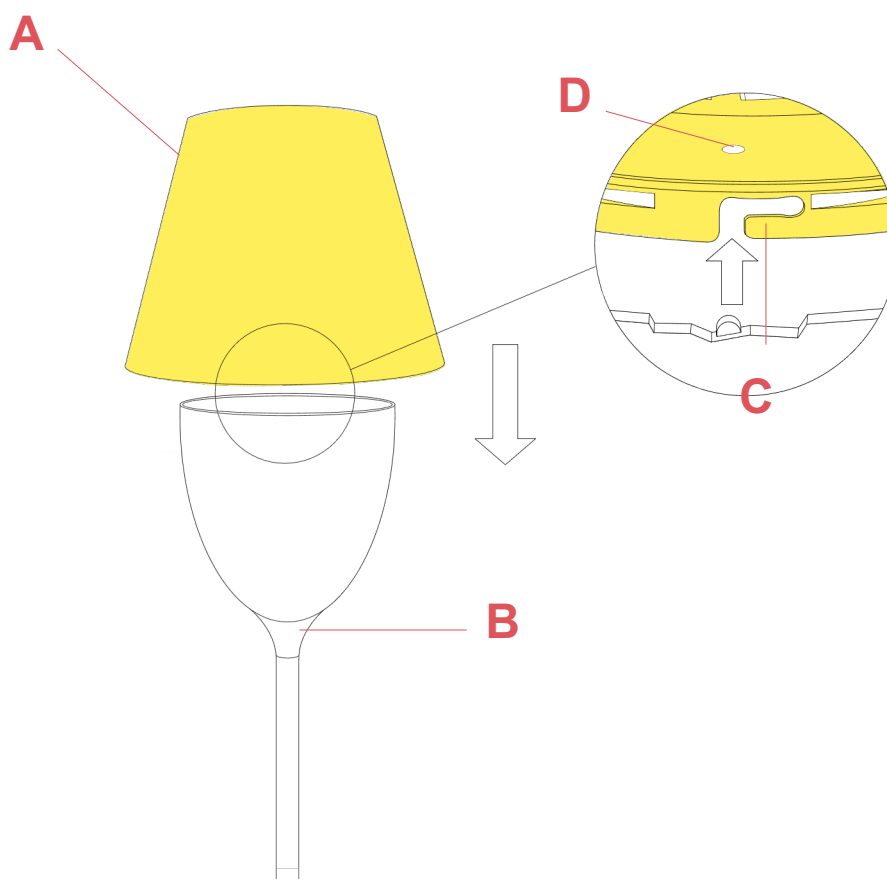


Fig.1

Install the external diffuser (A) onto the internal diffuser (B) being careful to make the three pins (C) in the internal diffuser correspond with the relative housings (D) in the external diffuser. Once carried out this operation it is necessary to lock the external diffuser by turning it slightly clockwise.

WARNING! When installing and whenever acting on the appliance, ensure that the power supply has been switched off. For the installation of the spare-part, it is necessary to consult a qualified electrician.

K TRIBE F2 F6305030

EN

RF28045

LED 220/240V 40-250W 4-100W RONDO' DIMMER



Bibliothèque
Nationale
p.05



Glo-ball
F1
p.05



Glo-ball
F2
p.05



Glo-ball
F3
p.05



Ic F1
p.05



Ic F2
p.05



Ktribe
F2
p.05



Ktribe
F3
p.05



Lounge
Gun
p.13



Luminator
Dim
p.05



Parentesi D
p.32



Ray
F1
p.17



Ray F2
p.17



Romeo
Moon F
p.44



Romeo
Soft
p.33



Spun
Light F
p.09



Toio
Led
p.38

WARNING! When installing and whenever acting on the appliance, ensure that the power supply has been switched off.
For the installation of the spare-part, it is necessary to consult a qualified electrician.

K TRIBE F2 F6305030

EN

RF28045

LED 220/240V 40-250W 4-100W RONDO' DIMMER



Fig.1

Open the box of the damaged dimmer.

For the opening, it is necessary to remove the rubber pad from underneath the dimmer box;



Fig.2

Unfasten the screw that locks the triangle terminal cover;

WARNING! When installing and whenever acting on the appliance, ensure that the power supply has been switched off.
For the installation of the spare-part, it is necessary to consult a qualified electrician.

K TRIBE F2 F6305030

EN

RF28045

LED 220/240V 40-250W 4-100W RONDO' DIMMER



Fig.3

Turn the dimmer box and remove the terminal cover;



Fig.4

Unfasten the three screws of the cable clamps;

WARNING! When installing and whenever acting on the appliance, ensure that the power supply has been switched off.
For the installation of the spare-part, it is necessary to consult a qualified electrician.

©2021 Flos - All rights reserved - www.flos.com
Flos reserves the right to introduce any changes to its own models, without prior notice.

K TRIBE F2 F6305030

EN

RF28045

LED 220/240V 40-250W 4-100W RONDO' DIMMER



Fig.5



Fig.6

Remove the cable clamp (refer to fig. 5) and disconnect the cables from the green terminal box .

Assemble now the new dimmer:

Connect the cables respecting the polarities, lock the wires by positioning the cable clamp and then fasten the three screws, cover the green terminal box with the triangle cover, turn the dimmer box, fasten the screw and stick-on the rubber pads.

WARNING! When installing and whenever acting on the appliance, ensure that the power supply has been switched off.
For the installation of the spare-part, it is necessary to consult a qualified electrician.

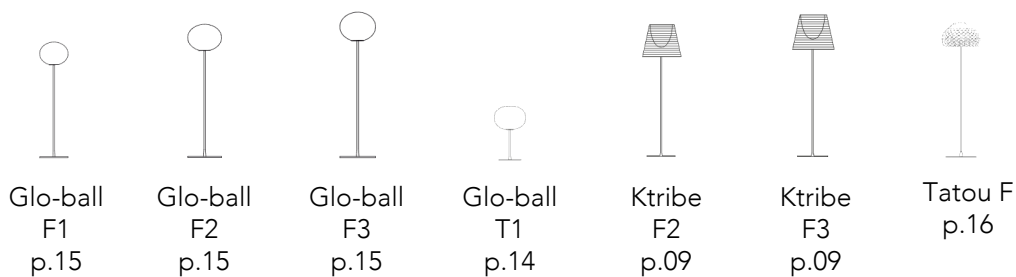
©2021 Flos - All rights reserved - www.flos.com
Flos reserves the right to introduce any changes to its own models, without prior notice.

K TRIBE F2 F6305030

EN

RF3020100

KIT OF 5 WHITE FEED PADS FOR BASE



WARNING! When installing and whenever acting on the appliance, ensure that the power supply has been switched off.
For the installation of the spare-part, it is necessary to consult a qualified electrician.

©2021 Flos - All rights reserved - www.flos.com
Flos reserves the right to introduce any changes to its own models, without prior notice.

K TRIBE F2 F6305030

EN

RF3020100

KIT OF 5 WHITE FEED PADS FOR BASE



Fig.1

Glue the feet (A) to the base by utilizing glue.
We advise to utilize the Loctite 454 glue.

WARNING! When installing and whenever acting on the appliance, ensure that the power supply has been switched off.
For the installation of the spare-part, it is necessary to consult a qualified electrician.