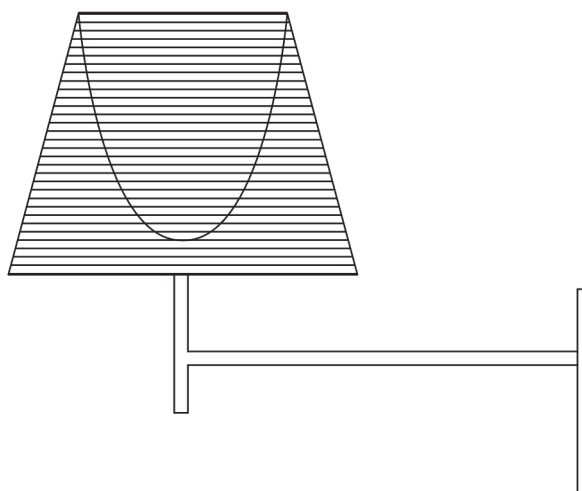


K TRIBE W

Designed by Philippe Starck, 2007

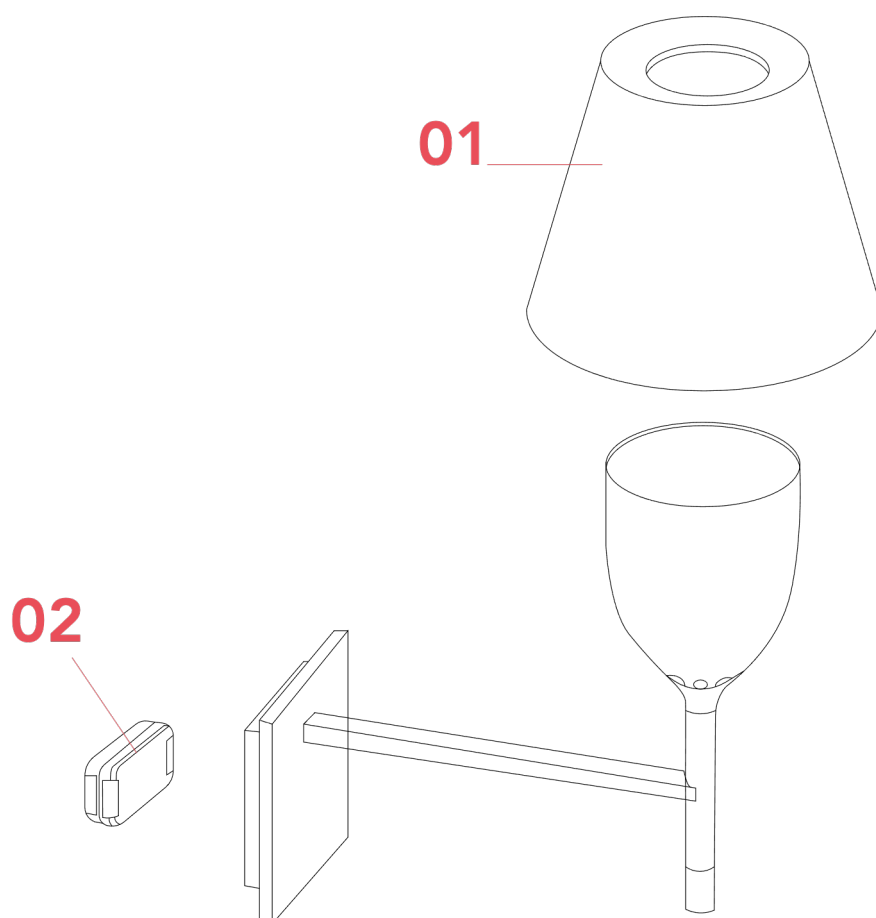
F6307030



K TRIBE W

F6307030

EN



01. RF6255009 – Fumé diffuser assembly

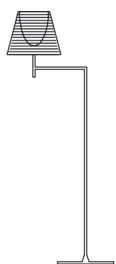
02. RF28737 – Dimmer Led 220-240V

K TRIBE W F6307030

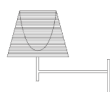
EN

RF6255009

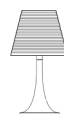
FUMÉ COATING DIFFUSER ASSEMBLY



Ktribe
F1
p.03



Ktribe
W
p.03



Miss K
p.03

WARNING! When installing and whenever acting on the appliance, ensure that the power supply has been switched off.
For the installation of the spare-part, it is necessary to consult a qualified electrician.

K TRIBE W F6307030

EN

RF6255009

FUMÉ COATING DIFFUSER ASSEMBLY

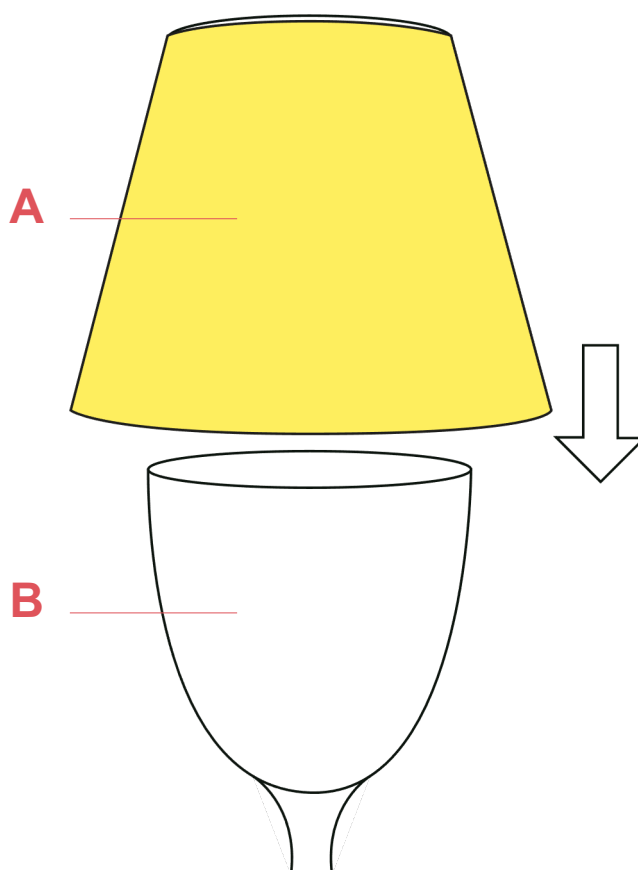


Fig.1

Lock the external diffuser (A) to the inner diffuser (B) by forcing (pushing) it to clicks-on.

To lock the Soft version diffusers, it is necessary to locate the diffuser (A) on top of the inner diffuser (B) and force it harder in way that it clips-on to the diffuser (B).

WARNING! When installing and whenever acting on the appliance, ensure that the power supply has been switched off.
For the installation of the spare-part, it is necessary to consult a qualified electrician.

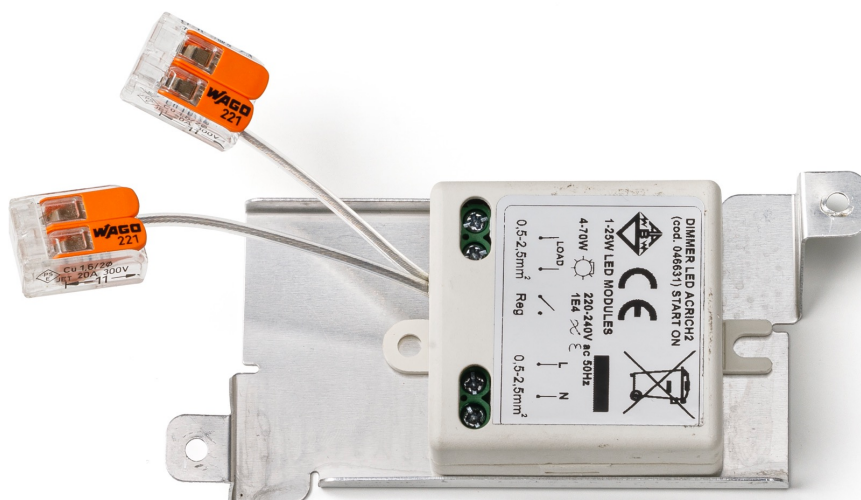
©2021 Flos - All rights reserved - www.flos.com
Flos reserves the right to introduce any changes to its own models, without prior notice.

K TRIBE W F6307030

EN

RF28737

DIMMER LED 220-240V



WARNING! When installing and whenever acting on the appliance, ensure that the power supply has been switched off. For the installation of the spare-part, it is necessary to consult a qualified electrician.

©2021 Flos - All rights reserved - www.flos.com
Flos reserves the right to introduce any changes to its own models, without prior notice.

K TRIBE W F6307030

EN

RF28737

DIMMER LED 220-240V

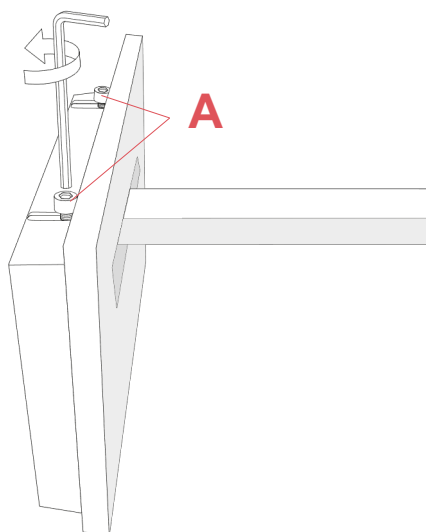


Fig.1

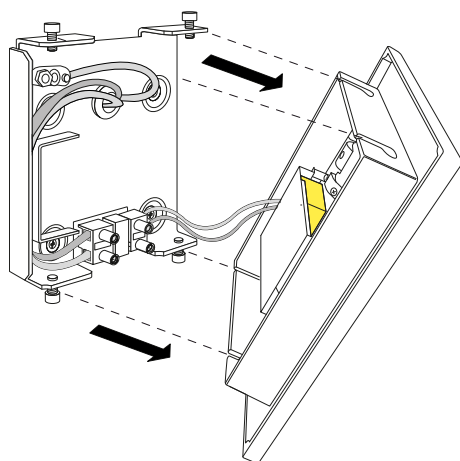


Fig.2

Unfasten the screws (A) and remove the lamp body from the wall attachment.

WARNING! When installing and whenever acting on the appliance, ensure that the power supply has been switched off. For the installation of the spare-part, it is necessary to consult a qualified electrician.

©2021 Flos - All rights reserved - www.flos.com

Flos reserves the right to introduce any changes to its own models, without prior notice.

K TRIBE W F6307030

EN

RF28737

DIMMER LED 220-240V

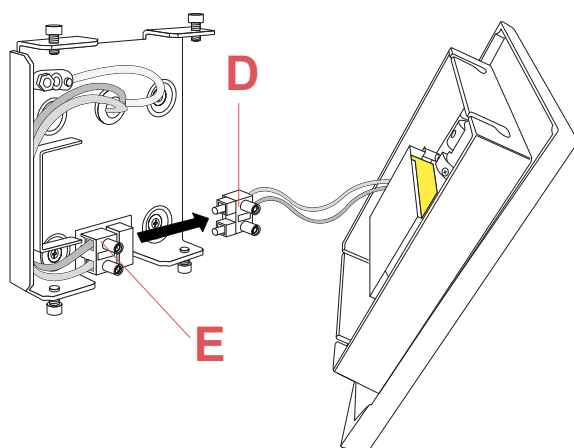


Fig.3

Disconnect the male connector (D) from the female connector (E).

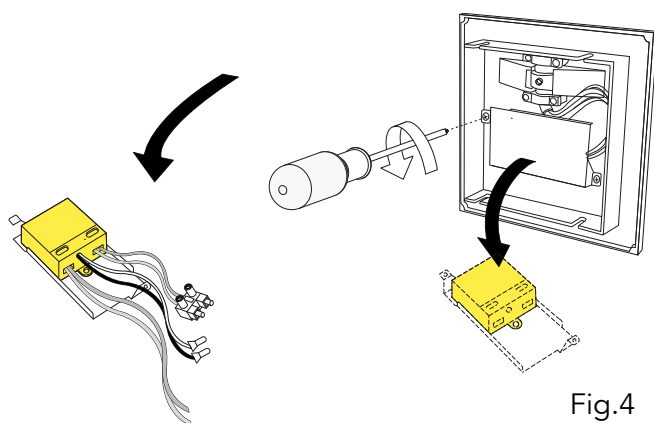


Fig.4

Open the dimmer box of the damaged dimmer by unfasten the screws;

WARNING! When installing and whenever acting on the appliance, ensure that the power supply has been switched off.
For the installation of the spare-part, it is necessary to consult a qualified electrician.

©2021 Flos - All rights reserved - www.flos.com
Flos reserves the right to introduce any changes to its own models, without prior notice.

K TRIBE W F6307030

EN

RF28737

DIMMER LED 220-240V

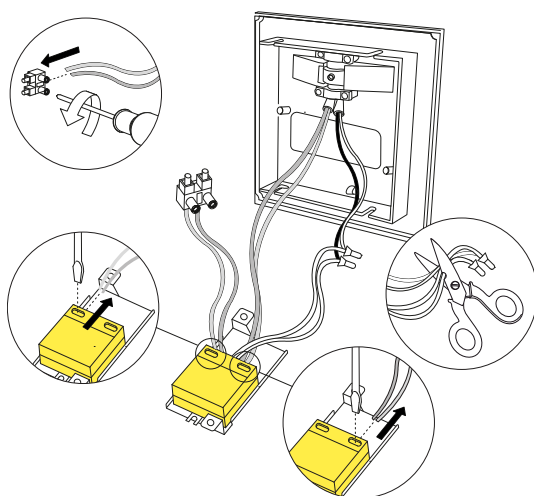


Fig.5

Disconnect the cables from the terminal boxes (I) through a tiny flat headed screw driver;

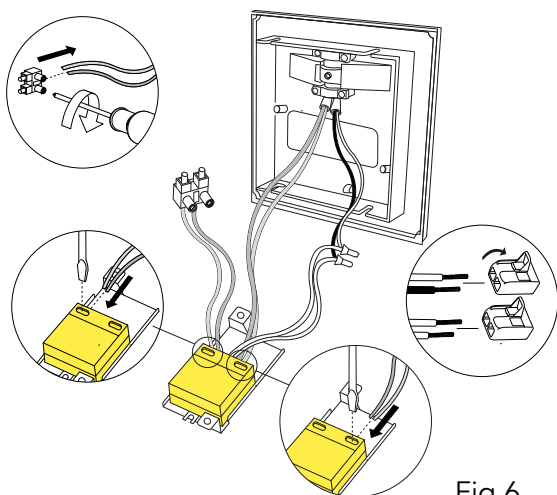


Fig.6

Assemble now the new spare part:

Replace the dimmer and connect the cables. When connecting the cables It is necessary to respect the polarities.

WARNING! When installing and whenever acting on the appliance, ensure that the power supply has been switched off. For the installation of the spare-part, it is necessary to consult a qualified electrician.

©2021 Flos - All rights reserved - www.flos.com
Flos reserves the right to introduce any changes to its own models, without prior notice.

K TRIBE W F6307030

EN

RF28737

DIMMER LED 220-240V

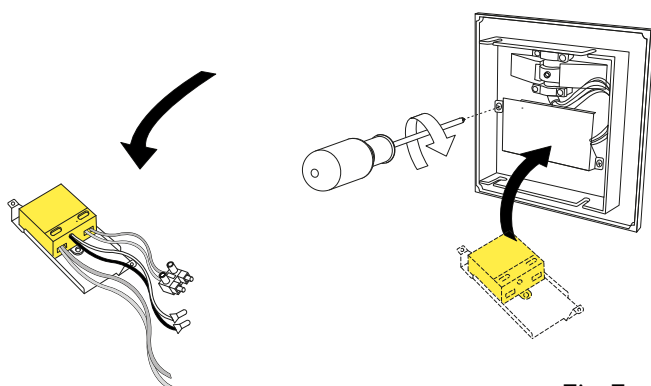


Fig.7

Close the dimmer box.

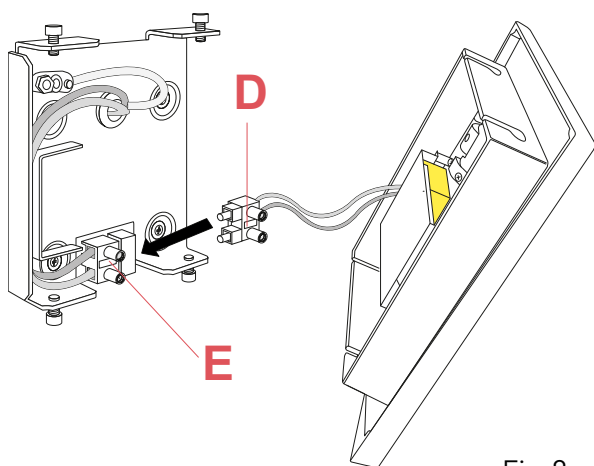


Fig.8

Connect the male connector (D) from the female connector (E).

Fasten the screws (A) and position the lamp body on the wall attachment. (Fig.1)

WARNING! When installing and whenever acting on the appliance, ensure that the power supply has been switched off.
For the installation of the spare-part, it is necessary to consult a qualified electrician.