

250.26.ORB / 250.26.ORT


DT STUDIO

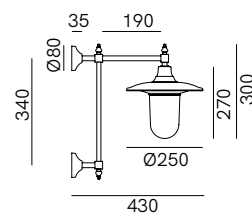
La collezione di lampade Ponte prende il nome dalla presenza di due punti di connessione uniti tra loro. Realizzate in ottone e rame, le applique ricreano suggestive atmosfere retrò, coniugando alla perfezione resa estetica e funzionalità.

*The Ponte collection of Italian lamps is named after the presence of two connecting points. Made of brass and copper, the wall lamps recreate evocative vintage atmospheres, perfectly combining aesthetic appeal with functionality.*



## SPECIFICHE TECNICHE | TECHNICAL DATA

<b>Tipologia   Type</b>	parete   wall
<b>Ambiente   Environment</b>	outdoor
<b>Materiali   Materials</b>	Ottone - rame - vetro   Brass - copper - glass
<b>Fonte luminosa   Light source</b>	1 x Max 15W LED E27 (non inclusa   not included)
<b>Tensione   Voltage</b>	240 Vac 50-60 Hz
<b>Dimmerazione   Dimming</b>	Taglio di fase IGBT / TRIAC   Phase cut IGBT / TRIAC
<b>Scatole   Boxes</b>	1
<b>Volume totale   Total volume</b>	0,061 m <sup>3</sup>
<b>Peso lordo   Gross weight</b>	4,5 kg
<b>Certificazioni   Certifications</b>	CE EAC  IP44



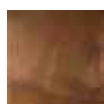
## FINITURE | FINISHES

### Montatura | Frame



**O**  
Ottone Anticato  
Antique Brass

### Testa | Shade



**R**  
Rame Anticato  
Antique Copper

### Vetro | Glass



**B**  
Bianco  
White



**T**  
Trasparente  
Transparent